

THE BIG GIVE

2024

GIVE IT, DON'T BIN IT!



Find out what to do with your unwanted belongings before you move out

TABLE OF CONTENTS

• What is The Big Give?	03
• When Does The Big Give Start?	04
• How to Donate in Halls of Residence	05
• How to Donate in Private Accommodation	07
• What if I'm not in the Street Collection Zone?	09
• Where can I donate on campus?	10
• Can I donate at other charity shops?	12
• Can I donate at other donation banks?	13
• What can I do with unwanted unopened food?	14
• What can I do with unwanted IT equipment?	16
• What can I do with large furniture and electrical items?	17
• What can I do with my unwanted bicycle?	18
• What can I do with my unwanted duvet?	19
• What can I do with blankets and sheets?	20
• What can I do with broken and damaged items?	21
• What can I do with things I need next year but can't take home?	22
• SUBU Sustainability Strategy	23
• What do our charity partners do?	24



WHAT IS THE BIG GIVE?



Are you going home for summer or graduating?

Donate your unwanted clothes, accessories, books, electrical and unopened non-perishable food to charity to help those in need.

The SUBU Big Give 2024 is where the Students Union helps BU students in halls of residence and private rented accommodation have a big end of year clear out when moving out, and donate all their unwanted stuff to charity, rather than letting it go in the bin and to landfill.

We also encourage BU Staff, and even people in the wider community close to campus to participate and make donations.

During The SUBU Big Give 2023, students in Halls donated over 2030 bags of unwanted stuff to the British Heart Foundation, which helped them raise over £15,120. Prama were able to collect over 500 bags from houses in Winton and on campus helping them raise over £7300. Students also donated unopened food to the SUBU Community Kitchen (our on-campus food bank for Students.)

WHEN DOES THE BIG GIVE START?



This year you will be able to donate in lots of convenient locations.

You can donate your unwanted stuff to charities from 15th May to 10th July using **Prama** purple bins on campus, or weekly street collections from specific streets in Winton, and if you are in Halls of Residence you can start donating using **British Heart Foundation** red bins from 15th May through to final move out dates in September.

This booklet gives you information on where you can take things like clothing shoes and accessories, household items, books and bric-a-brac, duvets and pillows, duvet covers and pillowcases and blankets, small electricals and white goods items and even bicycles and laptops.

Not all charities and projects will take the same types of donations, especially things like duvets, bedding, electricals and furniture. For 2024 we will be helping you find out where you can take donations - on campus, in your halls of residence, and in the Winton area where most students live in private rented housing.

You can download and use the **What3Words** App, to find donation point locations listed in this booklet.



HOW TO DONATE IN HALLS OF RESIDENCE



**If you live in the
following Halls
you can donate your
unwanted stuff**

Bailey Point, Belaton, Chesil,
Cranborne, Corfe, Dorchester, Home Park,
Lyme Regis, Lansdowne Point,
Lulworth/Union, Mercury, Oxford Point,
Purbeck, Skyline, The Artisan,
Winton Halls, 17a Christchurch Road



You will be able to find a donation bin in your halls' main reception area or communal lounge space.

Look out for a large red box with **British Heart Foundation** (reg charity number 225971) written on the side. Some halls even have metal donation bins on the outside of the building. If in doubt, just ask at your hall's main reception where you should place your unwanted stuff.



Please place your donations in bags or boxes rather than loose items, as this makes it much easier to be collected.

British Heart Foundation says **YES** to:



- Clothing
- Fashion Accessories
- Bags and Shoes
- Books
- Small household and kitchen items

British Heart Foundation says **NO** to:



- Duvets
- Pillows
- Bedding
- Sharp objects and knives
- Electrical items

For what to do with large furniture and electrical items - see page 17

HOW TO DONATE IN PRIVATE ACCOMMODATION



For 2024, your Students Union is working in partnership for the second year with local charity **Prama** (reg charity number 801967).

All proceeds go towards Prama's work in supporting older adults & careers across Bournemouth, Christchurch, Poole & Dorset, including people living with memory loss & other long term conditions.



SUBU has identified a Street Collection Zone where a high population of students live. If you live in private rented accommodation in one of the following roads in Winton, you can donate your unwanted stuff to Prama, simply by clearing it out and putting it by your garden gate on Wednesdays from 8th May through to 10th July.

You will receive a donation bag and sticker through your door, or you can collect a bag and sticker from SUBU Main Reception on Floor 1 of the Student Centre of Talbot Campus.

Or SUBU Office in Room BGB303, on Floor 3 of the Bournemouth Gateway Building on Lansdowne Campus.

If you live in private accommodation on one of these roads, you can put your donations out for street collection



Alma, Bingham, Cranmer, Crimea, Cardigan, Edgehill, Firs Glen, Fitz Harris, Frederica, Hawthorn, Heathwood, Junction, Kemp, Latimer, Leslie, Melville, Maple, Osborne, Privet, Parker, Ridley, Stanfield, Sedgley, Trafalgar, Talbot Hill, Talbot, Waterloo, Woodend, Wycliffe, Withermoor



Prama Charity Shops will be doing street collections around these roads every Wednesday, on 8th, 15th, 22nd, 29th May, 5th, 12th, 19th, 26th June, and 3rd & 10th July

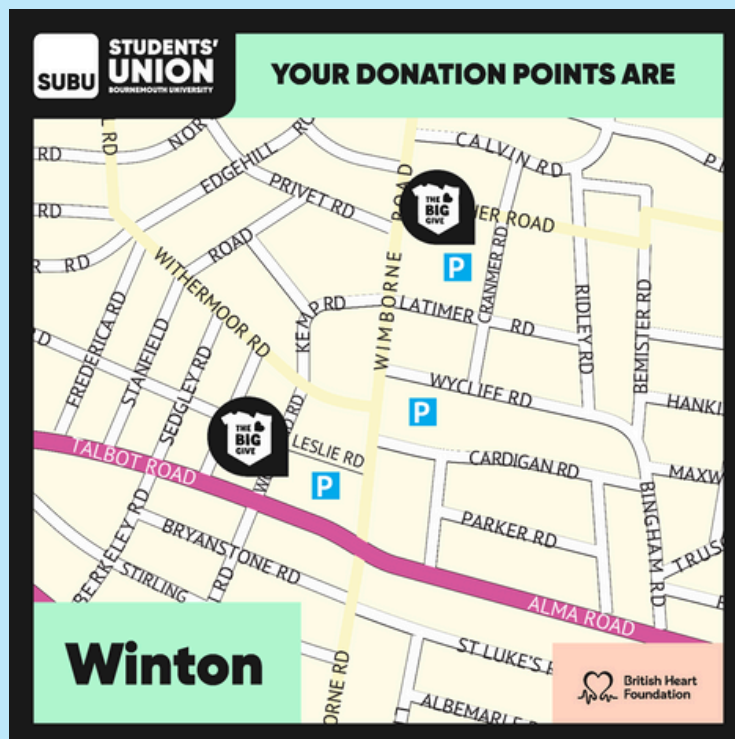
Please make sure your bags are left by your garden gate, or anywhere visible from the road, by 12pm on each collection day. If your bags remain uncollected by 5pm, please text Prama by **Whats App** on 07460 298053 or email furniture@prama.uk.

If you wish to donate large items of furniture, Prama offer fast and free collection of saleable furniture, for more information please contact 07460 298053 or email furniture@prama.uk

WHAT IF I'M NOT IN THE STREET COLLECTION ZONE?



There are temporary metal British Heart Foundation donation bins at Leslie Road Carpark, and Cranmer Road Carpark in Winton.



You can find these locations by using the What3Words Website or App

Cranmer Road Carpark

www.what3words.com /// blues.single.ample

Leslie Road Carpark

www.what3words.com /// times.united.upset

WHERE CAN I DONATE ON CAMPUS?



You can donate on campus at the following donation points in the purple [Prima Charity Shop](#) donation bins. You can find these locations by using the What3Words Website or App

LANSDOWNE

Bournemouth Gateway Building – Ground Floor Atrium

www.what3words.com /// hurray.settle.back

TALBOT

Poole Gateway Building – Ground Floor Atrium

www.what3words.com /// desire.tunnel.dawn

The Student Centre – Ground floor

www.what3words.com /// type.caller.lifted

Poole House – Ground Floor near reception

www.what3words.com /// spoken.agents.dollar

The Student Village – Laundry Room

www.what3words.com /// closer.leans.wake



Use any of the temporary purple Prama Charity Shop donation bins on campus, where you can donate your unwanted items.



Prama says **YES** to:



- Clothing
- Accessories
- Footwear
- Books
- Small household and kitchen items

Prama says **NO** to:



- Duvets
- Pillows
- Bedding
- Sharp objects and knives
- Large Electrical items

CAN I DONATE AT OTHER CHARITY SHOPS?



If you live elsewhere, you can donate at the following charity shops:

WINTON

British Heart Foundation, Mind, Barnardo's, Lewis Manning Hospice, Naomi House and Jacksplace, Sue Ryder, Salvation Army, The Trussell Trust, Debra, Margaret Green Animal Rescue

BOSCOMBE

Prama Charity Shop, Salvation Army, Naomi House and Jacksplace, They Mayors of Bournemouth's Charity Shop

POOLE

British Heart Foundation, Going for Bust, Lewis Manning Hospice, Dogs Trust, Oxfam, Poole PDSA, Age UK, British Red Cross, Julia's House, Debra Super Store, Naomi House & Jacksplace, Salvation Army

There is also a **Prama Charity Superstore** at Unit 3A, Westover Retail Park, Bournemouth BH9 3JS. 01202 804920

www.what3words.com

/// spoken.agents.dollar

There is also a **Prama** Charity Shop Donation Drop Off point at Unit 22 Benson Road, Nuffield Industrial Estate, Poole, BH17 0GB

www.what3words.com

/// closer.leans.wake

CAN I DONATE AT OTHER DONATION BANKS?



For details of recycling banks in the wider Bournemouth, Christchurch and Poole area, click on this link

www.bpcouncil.gov.uk/bins-waste-and-recycling/find-a-recycling-centre-or-bank



WHAT CAN I DO WITH MY UNWANTED UNOPENED FOOD?



FOOD BANK ON CAMPUS

You can donate your unwanted non-perishable food items such as rice, pasta and tinned food at the following donation Points on campus:-



Bournemouth Gateway Building (Lansdowne) Ground Floor Atrium

www.what3words.com

/// hurray.settle.back

The Student Centre (Talbot) – Ground Floor

www.what3words.com

/// drums.rubble.pulled

The Student Village (Talbot) – Laundry Room

www.what3words.com

/// closer.leans.wake

Food donated on campus will be used for the **SUBU Community Kitchen**, our on campus foodbank on Floor 2 of the Student Centre, especially for students in financial crisis.

www.subu.org.uk/CommunityKitchen

FOOD BANKS OFF CAMPUS

You can donate your unwanted non-perishable food items such as rice, pasta and tinned food at the following Trussell Trust Food Bank (registered charity number 1143446) donation points off campus:



Citygate Church – 138a Holdenhurst Rod (opposite Bournemouth Central Train Station)

www.what3words.com /// eaten.tiny.apron

Church Lifehouse, Life Centre – 711 – 715 Wimborne Road, Moordown (Winton)

www.what3words.com /// first.pocket.single

St Georges Church, 118 Haviland road, Boscombe

www.what3words.com /// maple.deny.ducks

www.trusselltrust.org/get-help/find-a-foodbank/bournemouth



WHAT CAN I DO WITH MY UNWANTED IT EQUIPMENT?



You can donate unwanted tablets, PC's, laptops and smart phones to DONATE IT, to be refurbished and donated to families in need in the local community.



donateit.co.uk

There are donation points at:

Bournemouth Library

www.what3words.com /// green.author.goals

Poole Library

www.what3words.com /// vibrate.occurs.react

Prama Charity Shop in Tuckton (near Southbourne)

www.what3words.com /// transfers.modern.wished



WHAT CAN I DO WITH MY LARGE FURNITURE AND ELECTRICAL ITEMS?



If you have furniture, large donations and electrical items in good condition, you can contact [Prama Charity Shops](#) and arrange a collection. Call [Prama](#) on 01202 207315 or email furniture@prama.uk



[Prama Superstore](#), Unit 3A, Westover Retail Park, Wimborne Road, Moordown, BH9 3JS.

www.what3words.com

/// noting.tuck.solid

You can also arrange for large donations and electrical items in good condition to be collected by [British Heart Foundation Furniture and Electrical Store](#). Ring 01202 983020.



[British Heart Foundation](#) furniture and Electrical Store, 470 - 472 Wimborne Road, Winton, BH9 2EY.

www.what3words.com

/// gasp.fixed.occupy


WHAT CAN I DO WITH MY UNWANTED BICYCLE?

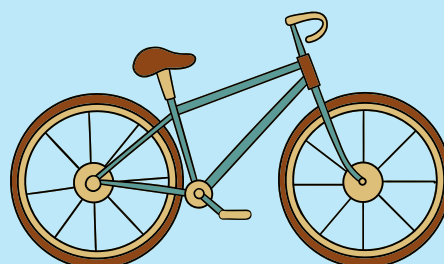


You can donate your old bicycle to Hope 2 Cycle.
Open Tuesday's, Thursday's & Saturday's from 10am til 4pm.

The number to ring is 07530 968506

878 Wimborne Road, Moordown, Bournemouth, BH9 2DR

www.what3words.com  burn.comic.pink



WHAT CAN I DO WITH MY UNWANTED DUVET?

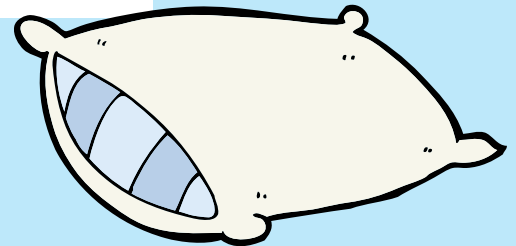
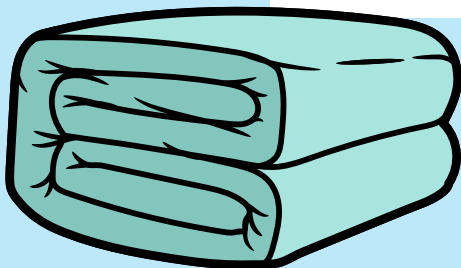


Dunelm shops will take duvets and pillows in good clean condition as part of their Take Back Textiles project

<https://www.dunelm.com/info/about/take-back-scheme>

There is a Dunelm shop at Turbary Retail park, 869 Ringwood Rd, Bournemouth BH11 8LL

www.what3words.com /// surcharge.prawn.ally



WHAT CAN I DO WITH BLANKETS AND SHEETS?

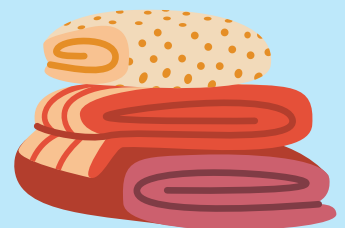
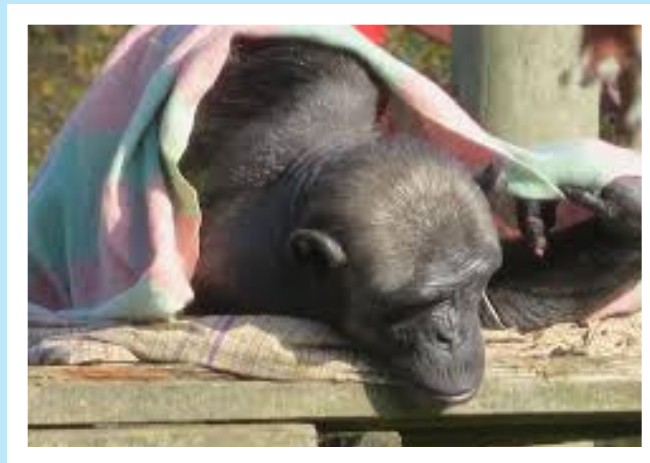
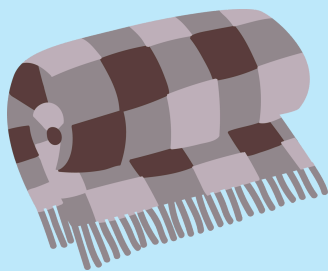


You can donate them and help a primate!!!!

In the Student Centre on Talbot Campus there will be a special Blanket Box for bedding donations which will be taken to **Monkey World Ape Rescue Centre** in Dorset.

Monkey World Say **YES** to duvet covers, pillow cases, fleece blankets, sheets, towels and socks.

Monkey World say **No** to crochet blankets, duvets, sleeping bags, pillows, cuddly toys, and mattress protectors. The stuffing in these items can be harmful to primates.



If you have a vehicle you can take blankets to **Monkey World** at Longthorns, Wareham, Dorset, BH20 6HH.

monkeyworld.org

www.what3words.com

[/// afflict.incisions.mulled](http://afflict.incisions.mulled)

WHAT CAN I DO WITH BROKEN AND DAMAGED ITEMS?



If you have a vehicle, you can take broken or damaged items to Bournemouth Recycling Centre. You can take other things such as garden waste, all kinds of metals, cooking oil, textiles and fabrics, furniture and electrical equipment.



Bournemouth Recycling Centre is at Millhams Road, just off the A348 at Longham. Open from 9:00am to 5:00pm Monday to Sunday (summer). You will need a form of ID with proof of address to prove where you live. [Check here for full details.](#)

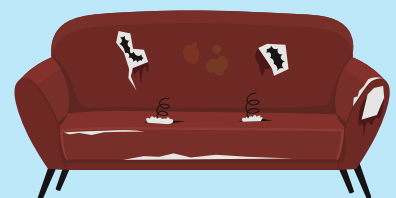
www.what3words.com /// budget.square.united

You can also use [Poole Recycling Centre](#). You will need a form of ID with proof of address to prove where you live. [Check here for full details.](#)

www.what3words.com /// wires.flute.dance

You can also use [Christchurch Recycling Centre](#). You will need a form of ID with proof of address to prove where you live. [Check here for full details.](#)

www.what3words.com /// foal.soils.task



WHAT DO I DO WITH THINGS I NEED NEXT YEAR, BUT CAN'T TAKE HOME?



Its not always possible to take all your belongings back home, but you might not be ready to say goodbye to your stuff quite yet. Bournemouth has a range of temporary storage solutions that make it easier to keep your kit secure over the summer and ready for you when you get back.

Examples include A-Storage at 203-205 Charminster Road, BH8 9QQ. Phone number 01202 520038

www.what3words.com /// gift.monkey.powers



www.a-storage.co.uk

SUBU SUSTAINABILITY STRATEGY

SUBU recognises that its activities have an impact upon the environment at local, regional, national and global levels and acknowledges a responsibility for the protection of the environment and the health of its members and the community. Sustainability is one of the key enablers of the SUBU 21/22 - 23/24 strategy and will be delivered through leadership to enhance its position as a sustainable organisation and manage the environmental impact of its actions.

At SUBU, Sustainability is defined as a focus on what we can do now for our present students to protect the future for incoming students; ensuring that our actions and events have a positive impact on the environment and the future of our campus, the local community and the global environment. Any decision made is not just influenced by the effects on the environment but also SUBU's members, staff, resources and key stakeholders.

The United Nations Sustainable Development Goals are embedded into every department within SUBU enabling us to listen to students' passions around sustainability; giving us an ability to empower them on their educational journey with clear consideration for the future of the environment and our society.

Click below to view our full Sustainability Strategy and commitments that are embedded in every department across the Union.

[SUBU Sustainability Strategy](#)



WHAT DO OUR CHARITY PARTNERS DO?

British Heart Foundation

Reg. Charity Number 255971

"Heart attacks that strike without warning, strokes that shatter futures, newborn babies born with broken hearts. These are just some of the cruelties of cardiovascular disease. And the brutal reality is, there is so much more for science to discover before we can beat the world's biggest killers.

That's why the British Heart Foundation exists. Funding research is how we change the game. And we all have a role to play. The tools we have at our disposal today - from heart transplants and pacemakers to stents and portable defibrillators - are all down to research. Research made possible by people like you."



Prama Charity Shops

Reg Charity Number 801967

Prama has 10 charity shops across Dorset well know for low prices, great bargains & amazing staff & volunteers. All proceeds go towards Prama's work in supporting older adults & carers across Bournemouth, Christchurch, Poole & Dorset, including people living with memory loss & other long term health conditions. Prama's mission is to support our community by delivering trusted services that reflect our values of respect, compassion & faith. We aim to promote a positive image of older age, challenging stereotypes & highlighting how much older people contribute to their communities.





THE BIG GIVE is organised by

The Students' Union at Bournemouth University

working in partnership with

The British Heart Foundation

Prama Charity Shops

Trussell Trust Bournemouth Foodbanks

BCP Council

If you have any questions about The Big Give,
please feel free to email
subusustainability@bournemouth.ac.uk

The information in the booklet is accurate as of May 2024

